

MANUAL v1.0 FOR MANAGING A SHARED WEBHOSTING VIA THE
GRAPHICAL WEB USER INTERFACE
VIRTUALMIN – WEBMIN



A manual published by *all2all* – Moving Art Studio ASBL
Copyright © Moving Art Studio – Eleni Postantzi – Patrick Brunswyck

GNU Free Documentation License
(<http://www.gnu.org/copyleft/fdl.html>)

Table of contents

1. Introduction.....	3
2. Connecting to Virtualmin.....	3
3. Information about your webhosting.....	4
4. The different types of hosting.....	4
5. Structure of the Virtualmin interface.....	5
6. The administrator's password.....	6
7. Adjust your quotas and limits.....	7
8. Creating a sub-server.....	7
What is a sub-server and what is its purpose?.....	7
How do I create a sub-server?.....	8
9. Creating an alias for the virtual server.....	8
What is a server alias?.....	8
How to create a server alias.....	9
10. Adding and modifying FTP/MySQL users.....	11
Add an FTP user with website access.....	12
11. Creating a new database with MySQL.....	12
12. Advanced MySQL management.....	14
Creating a new table.....	14
Create a MySQL view.....	15
Executing an SQL query / Importing tables.....	16
13. Delegating administrative tasks of your hosting.....	18
14. Modifying DNS parameters.....	18
15. Modifying the Apache Directives.....	21
Activating the .htaccess file.....	21
16. Read the Apache logfiles of your hosting and resolve problems.....	23
17. The Filemanager.....	23
18. PostgreSQL, WebDAV et SVN.....	24
WebDAV.....	24
Subversion.....	26
19. Backup.....	28
What is a backup?.....	28
New backup system for all shared all2all web and mail servers.....	28
Backup of all2all virtual servers.....	29
Backup of dedicated servers collocated on the all2all network.....	29
Personal backup	29
Warning!.....	32
20. Versions.....	33

1. Introduction

When your webhosting account is created we will send you an e-mail containing the following access information:

Domain name: mysite.be
Hosting server: karlmarx.all2all.org
Username: mysite
Password: 6PhF3exEfrLEJbY
URL management interface: <https://karlmarx.all2all.org:10000/>

Website address: <http://www.mysite.be/>
Website statistics: <http://www.mysite.be/stats>
Webalizer analyse logs: Enabled

Database MySQL : mysite
MySQL login : mysite
MySQL password : 6PhF3exEfrLEJbY
PhpMyAdmin : <https://karlmarx.all2all.org/phpmyadmin/>

FAQ: <http://www.all2all.net/informations/faq/>

The login data is fictitious. This example will be used throughout the manual.

2. Connecting to Virtualmin

With the above information at hand, visit the following website:

URL management interface: <https://karlmarx.all2all.org:10000/>

and login with the provided user name & password:

User name : mysite
Password : 6PhF3exEfrLEJbY



Login to Webmin

You must enter a username and password to login to the Webmin server on karlmarx.all2all.org.

Username

Password

Remember login permanently?

There is no need to install anything to be able to use Virtualmin/Webmin: you can manage your webhosting immediately with your familiar webbrowser.

3. Information about your webhosting

Once connected you will see a summary screen providing you with similar information as shown on the following illustration. By 'virtual server', we mean your website or webhosting.

The screenshot shows the Virtualmin Webmin interface. On the left is a navigation menu with options like 'Create Virtual Server', 'Edit Virtual Server', 'Server Configuration', and 'Logout'. The main area displays 'Virtual Server Information' for the server 'monsite.be', including details on logged-in user, IP address, version, server name, sub-servers, users, databases, and disk usage (72 kB out of 3 GB).

4. The different types of hosting

According to what type of webhosting you choose you will see different quota:

Type of hosting	Simple	Recommended	Large
Disk space (quota)	50MB	10GB	100GB
Sub-servers	1	5	15
Extra users	0	5	15
Databases	1	5	15
E-mail accounts (3000MB)*	1	10	100
Mailing lists (mailman)**	0	5	10

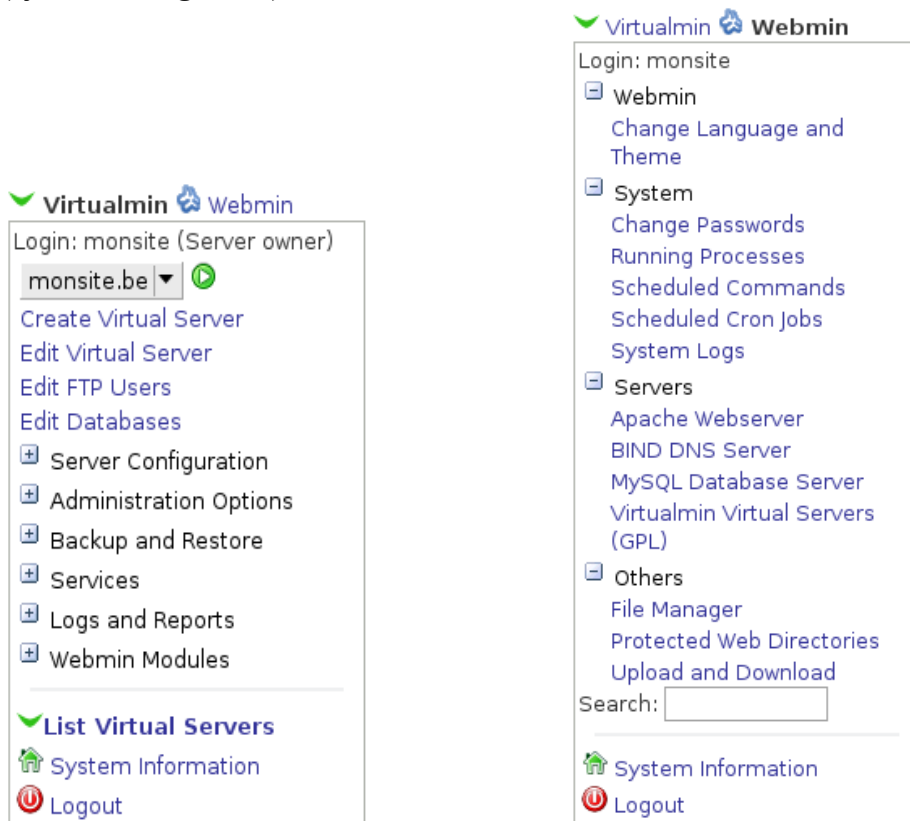


The e-mail accounts are located on a dedicated server. Therefore these cannot be configured by Virtualmin. For more information please consult our FAQ: <http://www.all2all.org/informations/faq/email-and-mailing-lists/new-email-account/> and our documentation page: <http://www.all2all.org/informations/documentation/>

For more information regarding mailing lists: <http://www.all2all.org/fr/informations/faq/email-and-mailing-lists/open-a-new-mailing-list/>

5. Structure of the Virtualmin interface

The Virtualmin interface is divided into two parts: The default interface is the Virtualmin interface (management of your virtual server). On the top left menu you can switch to the Webmin interface (system management).



Virtualmin let's you configure and manage your virtual server. This way you can:

- See the userquota on your server
* **Definition:** the term **quota** here means the limited amount of disk space your users are allowed to have on this account.
- Change the password of your users
- Create and manage users
- Create and manage your database
- Modify your DNS settings
- Configure your website (Apache configuration)
- Execute a personalised backup of your virtual server
- View the events in your log files of your virtual server

Webmin helps you with the management of your system. This way you can:

- Upload and download files through the use of the « File Manager » module
- Define protected directories
- Change the language and theme of Virtualmin/Webmin



Do not change the Virtualmin theme. Changing the theme could cause navigation limitations.

- Schedule tasks (cron jobs)
- View the log files (events) of your virtual server

The part on the right presents you with the information you have asked for by clicking on one of the links in the menu on the left.

E.g., by clicking on **Virtualmin** -> **Edit Virtual Server**, we can review the details of our virtual server:

Edit Virtual Server

In domain monsite.be

Virtual server details			
Domain name	monsite.be	Administration username	monsite
Administration group	monsite	Databases	1
Created on	10/Oct/2008 11:18 by eleni		
Home directory	/var/www/htdocs/monsite		

Configurable settings

Quotas and limits

Enabled features

Save Virtual Server

6. The administrator's password

By selecting **Virtualmin** -> **Edit Virtual Server** -> **Configurable settings** you can click on **Show...** to **view** the administrator's:



By checking the **Set to ...** box you can modify the password:

Administration password Leave unchanged (Show..) Set to ..



The password must contain at least 15 characters. Consult our **manual on secure password handling** that you can find on our site : <http://www.all2all.org/files/pdfs/securepasswords.pdf>

To save the new password you must click on the button 'Save Virtual Server'. You must not forget to also apply accordingly any other changes on the other 'Edit Virtual Server' pages.

Save Virtual Server

7. Adjust your quotas and limits

By clicking on **Virtualmin -> Edit Virtual Server -> Quotas and Limits**, you can view the disk space used, the disk space used by databases and the total amount of disk space used:

Quotas and limits	
Home disk space used (including sub-servers)	64 kB (64 kB by server administrator, 0 bytes by mail / FTP users)
Space used by databases	8 kB (8 kB in this server, 0 bytes in sub-servers)
Total disk space used	72 kB

8. Creating a sub-server

What is a sub-server and what is its purpose?

As the name suggests, a sub-server is located beneath the main virtual server. With a sub-server you can create a second, third etc...website (depending on the type of hosting you acquired) on the same webhosting/virtual server.

You can use a sub-server to create a new site, a sub-site, or a site in different languages.

How do I create a sub-server?

By clicking **Virtualmin** -> **Create Server** and then on **New virtual server type: Sub-server**

Help..

Create Virtual Sub-Server

New virtual server type: Sub-server | Alias of monsite.be

[-] New virtual server details	
Domain name	<input type="text"/>
Description	<input type="text"/>
Server configuration template	Defaults Settings For Sub-Servers ▾
Parent server	monsite.be (monsite)
[+] Advanced options	
[+] Enabled features	
[+] IP address and forwarding	
<input type="button" value="Create Server"/>	

You can then place the public files of your secondary site (sub-server) in the following directory (with your preferred FTP-client e.g. FileZilla):

`/var/www/htdocs/mysite/domains/my_sub_server.be/public`



Attention: The public files of your main site are located in this directory:
`/var/www/htdocs/mysite/public`

9. Creating an alias for the virtual server

What is a server alias?

When you want to link multiple domain names to the same site, you can create an alias server for each domain name you want to link to the main server. If you own several domain names and want them to be synonymous with the main dns name add them as alias servers to the main site.

How to create a server alias

Click on **Virtualmin** -> **Create Server** and then on **New virtual server type: Alias of mysite.be**

Help..

Create Alias Server

New virtual server type: [Sub-server](#) | Alias of monsite.be

New virtual server details	
Domain name	<input type="text" value="aliasdemonst.be"/>
Description	<input type="text" value="Alias de monsite.be"/>
Server configuration template	Default Settings ▾
Real server	monsite.be

Enabled features	
<input checked="" type="checkbox"/> Setup DNS zone?	<input checked="" type="checkbox"/> Setup website for domain?

Provide the domain name of the alias you want to use and verify that the two boxes “**Setup DNS zone**” and “**Setup website for domain**” are checked in the “**Enabled Features**” window.

Click on “**Create Server**” to create your alias server. 'the alias is now being created':

Setting Up Virtual Server

In domain `aliasofmysite.be`

Creating home directory ..
.. done

Adding new DNS zone ..
.. done

Adding slave zone on `dns1.all2all.org dns2.all2all.org dns4.all2all.org dns3.all2all.org` ..
.. done

Updating target virtual website ..
.. done

Re-starting DNS server ..
.. done

Re-starting slave DNS servers ..
.. done

Applying web server configuration ..
.. done

Saving server details ..
.. done

Sending email notification to domain owner ..
.. email sent to `mysite@karlmarx.all2all.org`

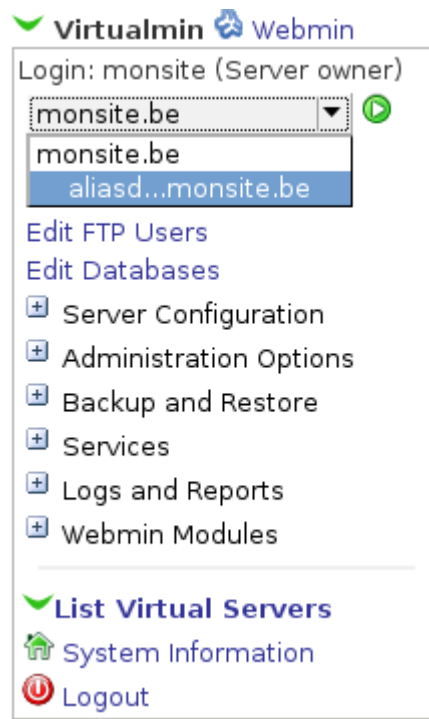
Updating Webmin user ..

.. done

Re-loading Webmin ..

.. done

If you pass this phase without any errors, the new alias will appear in the left menu:



10. Adding and modifying FTP/MySQL users

In order to create a new user for FTP or MySQL, click on the menu **Virtualmin** -> **Edit FTP Users**. Here you get an overview of the users already created. Here you can delete or edit existing users. You can create a new user by clicking on the link **Add a user to this server**.

In domain monsite.be

Virtual domain user mailbox details

Username @monsite.be

Real name

Password

Login temporarily disabled

Quota and home directory settings

Home directory quota Unlimited 100 MB

Home directory Automatic Subdirectory of server's home

Email settings

Additional email addresses

Send new account email to Nowhere Other address

Other user permissions

Login permissions

Allow access to databases

Create

Through the use of the menu **Quota and Home Directory Settings** and the sub-menu **Other user permissions**, you can set the available disk space for:

- a regular user (**Login permissions** = Email Only)
- a FTP user (**Login permissions** = Email and FTP)
- a user with access to your databases (Click on the name of the desired database in the sub-menu **Allow access to databases**)

Next click on **Create** and the new user is created.



When you would like to create MySQL-user only, then it is sufficient to grant him access to MySQL itself and no login is required for the site. So give the MySQL user the 'e-mail only' login permission. This way if a hacker were to lay his hands on your MySQL-login, he still doesn't have access to FTP on your webhosting.

More information regarding the configuration of e-mail accounts can be found here : <http://all2all.org/en/informations/documentation/>



The possibility to create an e-mail user does not exist for shared webhosting. This option is only present when you have a virtual server or dedicated server hosting account. For the shared hosting contracts, mailboxes are created on our dedicated mailserv

Add an FTP user with website access

When you want to add additional users to administer the contents of your website, click on the link “**Add a website FTP access user**”. This will allow you to create a user with FTP access to your website content.

The website FTP access user has no additional email address window and can not have home directory quota set.

More info concerning [FTP software](#) and [how to configure](#) it, you can find in our FAQ.

11. Creating a new database with MySQL

Click on **Virtualmin** -> **Edit Databases** to see the databases on your hosting.

Help..

Edit Databases

In domain monsite.be

Databases Passwords

This table lists any existing databases associated with this virtual server. Click on the Manage links to see their tables, or on a database name to see further information.

Select all. | Invert selection. | Create a new database.

Database name	Database type	Action
<input type="checkbox"/> monsite	MySQL	Manage..

Select all. | Invert selection. | Create a new database.

Delete Selected

Based on your limits, 2 additional databases can be added.

You can modify an existing database just by clicking on the name of the database, e.g. mysite. You then get to see the details of the database and the two following buttons:

- **Delete** this database
- **Manage** database

If you click on Manage Database you can view and modify records and data. (like you can by utilising phpMyAdmin)

Edit Database

In domain `monsite.be`

Database details	
Database name	monsite
Database server type	MySQL
Size on disk	8 kB
Number of tables	0

[Delete This Database](#) [Manage Database](#)

[Return to database list](#)

To create a new database click on the **Create a new database** button.

You can now enter the desired name of the database. If you plan on using special characters you need to choose the correct option in the list **Character set for MySQL database**.

Create Database

In domain `monsite.be`

Database details	
Database name	<input type="text"/>
Database server type	MySQL ▾
Character set for MySQL database	<Default> ▾

[Create](#)

- <Default>
- 7bit Swedish
- DOS West European
- ISO 8859-2 Central European
- HP West European
- US ASCII
- DEC West European
- KOI8-R Relcom Russian
- EUC-JP Japanese
- Big5 Traditional Chinese
- ISO 8859-8 Hebrew
- Shift-JIS Japanese
- cp1252 West European
- TIS620 Thai
- EUC-KR Korean
- KOI8-U Ukrainian
- GB2312 Simplified Chinese
- ISO 8859-7 Greek
- Windows Central European
- GBK Simplified Chinese

[Return to database list](#)

12. Advanced MySQL management

Via the menu **Webmin** -> **Servers** -> **MySQL Database server**, you can:

- Create a new table
- Create View (view your tables and data)
- Execute SQL queries
- Make a backup of the entire database or a backup of a selection of one or more tables
- Import data from a text file or some other database structured file

Virtualmin Webmin
Login: monsite
Webmin
System
Servers
Apache Webserver
BIND DNS Server
MySQL Database Server
Virtualmin Virtual Servers (GPL)
Others
Search:
System Information
Logout

Module Index
Help..

Edit Database

monsite

This database has no tables.

Create a new table Fields: Create View Backup Database Execute SQL

[Return to database list](#)

Creating a new table

To create a new table in the selected database, click on “**Create a new table**”. Enter the name of the new table, choose what type and copy fields from another table if required. Now you can add the new fields by clicking on “**Create**” to the newly created table.

Module Index
Help..

Create Table

New table options

Table name

Copy fields from table

Type

Field name	Data type	Type width	Key?	Autoinc?	Allow nulls?	Unsigned?	Default value
<input type="text"/>	<input type="text"/>	<input type="text"/>	<input type="checkbox"/> Yes <input type="checkbox"/> No	<input type="checkbox"/> Yes <input type="checkbox"/> No	<input checked="" type="checkbox"/> Yes <input type="checkbox"/> No	<input type="checkbox"/> Yes <input type="checkbox"/> No	<input type="text"/>
<input type="text"/>	<input type="text"/>	<input type="text"/>	<input type="checkbox"/> Yes <input type="checkbox"/> No	<input type="checkbox"/> Yes <input type="checkbox"/> No	<input checked="" type="checkbox"/> Yes <input type="checkbox"/> No	<input type="checkbox"/> Yes <input type="checkbox"/> No	<input type="text"/>
<input type="text"/>	<input type="text"/>	<input type="text"/>	<input type="checkbox"/> Yes <input type="checkbox"/> No	<input type="checkbox"/> Yes <input type="checkbox"/> No	<input checked="" type="checkbox"/> Yes <input type="checkbox"/> No	<input type="checkbox"/> Yes <input type="checkbox"/> No	<input type="text"/>
<input type="text"/>	<input type="text"/>	<input type="text"/>	<input type="checkbox"/> Yes <input type="checkbox"/> No	<input type="checkbox"/> Yes <input type="checkbox"/> No	<input checked="" type="checkbox"/> Yes <input type="checkbox"/> No	<input type="checkbox"/> Yes <input type="checkbox"/> No	<input type="text"/>

Create

[Return to table list](#) | [Return to database list](#)

Create a MySQL view

You can create a MySQL view, these are virtual tables that consist out of other tables according to certain criteria. From a technical point of view this is done with a **SELECT**-command. This means that the reviewing of data does not require any disk space.

To create a view, click the “**Create view**” button, enter a view name and enter the SQL selection query that seem fit to your needs.

[Module Index](#)

Create View

monsite

View details	
View name	<input type="text"/>
SQL selection query	<input type="text"/>
View processing algorithm	Automatic <input type="button" value="v"/>
View owner	<input checked="" type="radio"/> Default <input type="radio"/> <input type="text"/>
View execution privileges	<input checked="" type="radio"/> Default <input type="radio"/> From owner <input type="radio"/> From user
Insert checking	<input checked="" type="radio"/> None <input type="radio"/> Underlying views <input type="radio"/> This view only

[Return to table list](#) | [Return to database list](#)

Executing an SQL query / Importing tables

You can run a SQL query by clicking the “Execute SQL” button.
You can type out a SQL query directly:

[Module Index](#)
[Help..](#)

Execute SQL

Execute SQL | [Run SQL from file](#) | [Import text file](#)

Enter an SQL command to execute on database monsite ..

[Return to table list](#) | [Return to database list](#)

Or you can run a SQL query that is situated on your webhosting or on your computer:

[Module Index](#)
[Help..](#)

Execute SQL

Execute SQL | **Run SQL from file** | [Import text file](#)

Select an SQL commands file to execute on database monsite.
This can also be used to restore a MySQL backup, which is just a file of SQL commands.

From local file

From uploaded file

[Return to table list](#) | [Return to database list](#)

Or you can select a text data file to import into the MySQL database, e.g. Mysite. (This file must contain one database record per line, with the fields in either tabs or comma separated value format):

[Module Index](#)
[Help..](#)

Execute SQL

[Execute SQL](#) [Run SQL from file](#) [Import text file](#)

Select a text data file to import into MySQL database monsite ..

This file must contain one database record per line, with the fields in either tab separated or CSV format.

Text file import options

Text file source

From local file ...

From uploaded file Browse...

Table to import data into

<From filename> v

Delete data in table first?

Yes No

Ignore duplicate rows?

Yes No

File format

CSV with quotes CSV without quotes Tab separated

Execute

[Return to table list](#) | [Return to database list](#)



This is the most frequently used method of **importing data or tables into a database**. The "Execute SQL" function is more powerful than the one you can find in phpMyAdmin which allows for a greater file input because there is **no limit** set to **"execution time"** or **"file size"**.

13. Delegating administrative tasks of your hosting

You can create additional administrators to whom you would like to delegate tasks to without compromising your entire webhosting through applying access limitations.

To create a new administrator for your hosting to whom you want to delegate tasks to, go to the menu **Administration Options -> Manage Extra Admins** and click on **Add a new extra administrator**.

Create Extra Administrator
In domain `monsie.be`

Details of extra administrator

Administrator username

Password for username

Real name or description

Can create virtual servers? Yes No

Can rename domains? Yes No

Can configure server features? Yes No

Can access other Webmin modules? Yes No

Edit capabilities for virtual servers

<input type="checkbox"/> Can edit virtual server	<input type="checkbox"/> Can manage users
<input type="checkbox"/> Can manage aliases	<input type="checkbox"/> Can manage databases
<input type="checkbox"/> Can change IP address	<input type="checkbox"/> Can manage SSL certificates
<input type="checkbox"/> Can edit forwarding frame	<input type="checkbox"/> Can manage extra admins
<input type="checkbox"/> Can edit email settings	<input type="checkbox"/> Can create backups
<input type="checkbox"/> Can select shared IPs	<input type="checkbox"/> Can create catchall aliases
<input type="checkbox"/> Can use web page editor	<input type="checkbox"/> Can disable virtual servers
<input type="checkbox"/> Can delete virtual servers	

You can now choose what tasks the new administrator can execute.

14. Modifying DNS parameters

DNS, the **Domain Name System**, is a system that can establish the connection between an **IP-address** and a **domain name**. It enables you to find data by using a domain name. DNS is designed to facilitate the need for us to memorize all those IP addresses. So we only need to remember a domain name. E.g. www.all2all.net could have the the following IP (123.124.125.96). Computers and other devices can use this domain name and convert it back to an IP address. Computers communicate via the internet by using IP addresses (routing).

DNS works by **resolving** a domain name with the help of a server. When a user wants to visit a website, e.g. www.all2all.org, the computer will send out a request "what is the IP-address of www.all2all.org?" The authoritative DNS server then replies with the actual IP-address, in this case 62.58.108.11. The computer now knows the IP and can establish a connection.

It is also possible to do the reverse and ask a DNS server the question "what domain names belong to this IP address?". This is called doing a reverse DNS lookup of the type PTR.

The most important types of **records** for DNS are:

- **A record** or **address record** that connects a hostname (e.g. www.all2all.org) to an IPv4 address of 32 bits divided over four bytes (4 octets) (e.g. 62.58.108.11).
- **NS record** or **name server record** that defines the DNS-server(s) for the domain.
- **MX record** or **mail exchange record** that defines the mail server(s) for the domain.


Through the menu **Virtualmin -> Services -> DNS Domain**, you can manage your DNS-zone.

[Module Index](#)


Edit Master Zone

monsite.be


Type	Records	Type	Records
Address	8	Well Known Service	0
Name Server	3	Responsible Person	0
Name Alias	0	Reverse Address	0
Mail Server	2	Location	0
Host Information	0	Service Address	0
Text	0	Public Key	0
Sender Permitted From	0	All	13




Edit Zone Parameters



Find Free IPs



Record Generators



Lookup WHOIS Information

- Apply Changes** Click this button to apply changes for this zone only, using the command `rndc reload monsite.be`. This will only work if changes have been applied for the entire server at least once since the zone was created.
- Freeze the zone** Click this button to freeze a dynamic zone before updating it. This will send the command `rndc freeze monsite.be` to the zone.
- Unfreeze the zone** Click this button to unfreeze a dynamic zone after having updated it. This will send the command `rndc thaw monsite.be` to the zone.

[Return to zone list](#)

You can review the records of a zone by clicking on the corresponding record type. (e.g. click on Mail Server to review the MX records of your domain).

To add a new record, e.g a new MX record, click on Mail Server, enter the new data and click on create.

[Module Index](#)

Mail Server Records

In monsite.be

Add Mail Server Record

Name

Mail Server

Time-To-Live Default seconds

Priority

Select all. | Invert selection.

Name	TTL	Priority	Mail Server
<input type="checkbox"/> monsite.be.	Default	5	maximusconfessor.all2all.org.

Name	TTL	Priority	Mail Server
<input type="checkbox"/> monsite.be.	Default	10	krishna.all2all.org.

Select all. | Invert selection.

[Return to zone list](#) | [Return to record types](#)

You can review all of your records by clicking **All**:

[Module Index](#)

All Records

In monsite.be

Select all. | Invert selection.

Name	Type	TTL	Values
<input type="checkbox"/> monsite.be.	NS	Default	dns1.all2all.org.
<input type="checkbox"/> monsite.be.	NS	Default	dns2.all2all.org.
<input type="checkbox"/> monsite.be.	NS	Default	dns3.all2all.org.
<input type="checkbox"/> monsite.be.	MX	Default	5 maximusconfessor.all2all.org.
<input type="checkbox"/> monsite.be.	MX	Default	10 krishna.all2all.org.
<input type="checkbox"/> monsite.be.	A	Default	62.58.108.23
<input type="checkbox"/> www.monsite.be.	A	Default	62.58.108.23

Name	Type	TTL	Values
<input type="checkbox"/> ftp.monsite.be.	A	Default	62.58.108.23
<input type="checkbox"/> mail.monsite.be.	A	Default	62.58.108.13
<input type="checkbox"/> web.monsite.be.	A	Default	62.58.108.23
<input type="checkbox"/> smtp.monsite.be.	A	Default	62.58.108.13
<input type="checkbox"/> imap.monsite.be.	A	Default	62.58.108.13
<input type="checkbox"/> pop.monsite.be.	A	Default	62.58.108.13

Select all. | Invert selection.

Delete Selected

[Return to zone list](#) | [Return to record types](#)

To modify a record, you just have to click on the name of the record. Modify the record to your wishes and click on **Save**.

[Module Index](#)

Edit Mail Server

In monsite.be

Edit Mail Server Record	
Name	<input type="text" value="monsite.be."/>
Mail Server	<input type="text" value="maximusconfessor.all2all.org."/>
Time-To-Live	<input checked="" type="radio"/> Default <input type="radio"/> <input type="text"/> seconds ▾
Priority	<input type="text" value="5"/>
<input type="button" value="Save"/> <input type="button" value="Delete"/>	

[Return to zone list](#) | [Return to record types](#) | [Return to records](#)



After you have applied the desired changes to you zone file (adding, deletion or editing), you have to return to the mainpage of your zone management. (Return to record types or through clicking the menu **Virtualmin -> Services -> DNS Domain**) and click on the "Apply Changes" button so your modifications can be registered to your zone file.

15. Modifying the Apache Directives



Never change the preconfigured values unless you know what the consequences are.

Via the menu **Virtualmin** -> **Services** -> **Configure Website**, you can modify the configuration settings of your Apache Webserver.

[Module Index](#)

Virtual Server Options

[Apply Changes](#)

For monsite.be:80

Virtual Server Options

Processes and Limits Networking and Addresses Log Files Document Options MIME Types

Error Handling Aliases and Redirects CGI Programs Filters Languages

Show Directives

Per-Directory Options

Directory /var/www/htdocs/monsite/public

Activating the .htaccess file



If you are going to install a CMS (Content Management System, e.g. Drupal or Joomla!) this will contain a .htaccess file.

This file is needed to create your own URLs or directives. By default this file is NOT active on our shared hosting accounts. If there is a .htaccess present then you will receive the error message number 403.

Via the menu **Virtualmin** -> **Services** -> **Configure Website** you can adjust the settings to activate the .htaccess file.

Click on the **Show Directives** icon followed by the `<Directory /var/www/htdocs/mysite/public>` icon now click on **Show Directives** again (now you are located in the **per-directory options** for the **directory /var/www/htdocs/mysite/public on mysite.be:80**)

Now click on the **AllowOverride AuthConfig Limit**.

[Module Index](#)

Directives

For Directory /var/www/htdocs/monsite/public on monsite.be:80

```
Options IncludesNOEXEC -Indexes SymL .. /etc/apache2/sites-available/monsite.be.conf (12)
allow from all /etc/apache2/sites-available/monsite.be.conf (13)
AllowOverride AuthConfig Limit /etc/apache2/sites-available/monsite.be.conf (14)
```

[Manually edit directives](#)

Edit Apache directive:

[Return to directory index](#)

In the **Options file can override..** section check **Selected below...** and check all boxes.

[Module Index](#)

Document Options

[Apply Change](#)

For Directory /var/www/htdocs/monsite/public on monsite.be:80

Document Options for Directory /var/www/htdocs/monsite/public

Directory options Default Selected below..

Option	Set for directory	Merge with parent
Execute CGI programs	<input type="radio"/> Yes <input checked="" type="radio"/> No	<input type="radio"/> Enable <input type="radio"/> Disable
Follow symbolic links	<input type="radio"/> Yes <input checked="" type="radio"/> No	<input type="radio"/> Enable <input type="radio"/> Disable
Server-side includes and execs	<input type="radio"/> Yes <input checked="" type="radio"/> No	<input type="radio"/> Enable <input type="radio"/> Disable
Server-side includes	<input checked="" type="radio"/> Yes <input type="radio"/> No	<input type="radio"/> Enable <input type="radio"/> Disable
Generate directory indexes	<input type="radio"/> Yes <input type="radio"/> No	<input type="radio"/> Enable <input checked="" type="radio"/> Disable
Generate Multiviews	<input type="radio"/> Yes <input checked="" type="radio"/> No	<input type="radio"/> Enable <input type="radio"/> Disable
Follow symbolic links if owners match	<input checked="" type="radio"/> Yes <input type="radio"/> No	<input type="radio"/> Enable <input type="radio"/> Disable

Options file can override.. Default Selected below... **Generate MD5 digests** Yes No Default

- Authentication options
- MIME types and encodings
- Indexing and index files
- Hostname access control
- Directory options

Generate ETag header from Default Selected attributes : inode number Last modified time File size

Error message footer **WebDAV enabled?** Yes No Default

Allowing infinite depth DAV PROPFIND requests? Yes No Default **Minimum DAV timeout in seconds** Default

[Save](#)

[Return to directory index](#)

Options file can override.. Default Selected below...

- Authentication options
- MIME types and encodings
- Indexing and index files
- Hostname access control
- Directory options

Click on **Save** to and then on **Apply Change** (in the upper right corner) to apply all the changes.

The **AllowOverride AuthConfig Limit** directive has now turned into **AllowOverride All**.

```
Options IncludesNOEXEC -Indexes SymL .. /etc/apache2/sites-available/monsite.be.conf (12)
allow from all /etc/apache2/sites-available/monsite.be.conf (13)
AllowOverride All /etc/apache2/sites-available/monsite.be.conf (14)
```

Manually edit directives

Edit Apache directive:

Action

16. Read the Apache logfiles of your hosting and resolve problems

Reviewing your webhosting logfiles is a very useful step towards resolving problems that can occur with your site. We advise you to always go through these logs before you contact the all2all support service (support@all2all.net) and mail them to us if necessary.

You can view the access and error logfiles via the menu: **Virtualmin -> Logs and Reports**.

By default, only the last 20 lines of the logfile will be showed but you can configure this setting and you can search for keywords as well.

17. The Filemanager

There are 2 ways to upload files to your website:

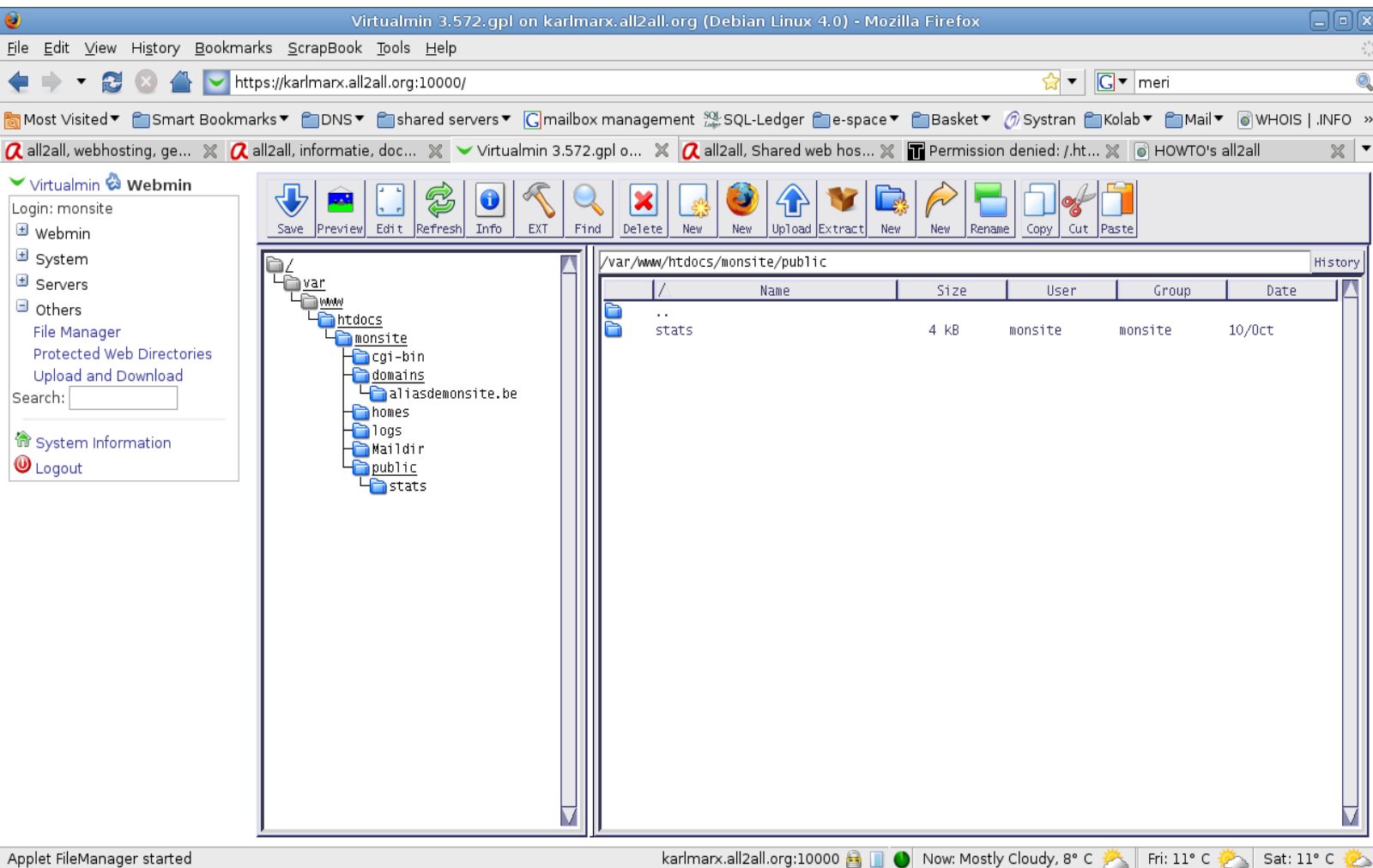
- the “classic” method via **FTP**
Connect with a correctly configured FTP client like Filezilla, Cyberduck, etc. You also need the access info you received by e-mail when your hosting account had been set up:
Hosting server: karlmarx.all2all.org
Username: mysite
Password: 6PhF3exEfrLEJbY
- via the **Filemanager**

To get to the filemanager click on **Virtualmin**, followed by **Webmin** then **Others -> Filemanager**.

In this case you don't need an FTP client, however it does require the Java Virtual Machine to be installed on your computer. You can verify your Java installation here:

<http://www.java.com/en/download/installed.jsp>

This is a powerful tool that allows you amongst many other things to upload compressed files and extract them on the server itself through using the **Extract** button



18. PostgreSQL, WebDAV et SVN

These three services are installed but are not active. If you require them then please contact the all2all support service at (support@all2all.org) so we can activate them for you.

WebDAV

WebDAV (Web-based Distributed Authoring and Versioning) is a protocol (to be more precise, an extension to the HTTP-protocol) that allows simplified filemanagement on servers located elsewhere. It is possible to download, upload and synchronize files and directories in a simple and fast manner. The most important goal of WebDAV is to not only read but also write files over the Internet. WebDAV can be used by multiple users that work on the same document at the same time. To achieve this it keeps track of all the access permissions on files and modifications to files. In Windows XP the WebDAV directories are located in "Network Favorites".

To summarize, these are the extensions DAV provides:

- **Protection against damaged files:** mechanisms to ensure synchronization. The DAV protocol **supports access control:** exclusive and shared access rights.
- **Properties:** meta-data on files (title, subject, author, etc...) .
- **Management file's attributes:** copying, moving, deleting, renaming of files...
- **Access control:** Access control to the different DAV sources can be restricted. Generally, WebDAV supposes that there is already access control provided through other services and therefore does not provide a robust authentication mechanism.

Once WebDAV is activated it appears in a new menu called **DAV Authentication** under **Virtualmin -> Services :**

- Services
 - Configure Website
 - DAV Authentication
 - DNS Domain



Do not change the initial configuration of WebDAV. **You can grant users permission** to use WebDAV by clicking on Virtualmin and then on Edit FTP Users. Click on the username and then on "**Other user permissions**". Here you can activate the DAV login.

Edit Mailbox

In domain monsite.be

Virtual server administration user's mailbox details	
Username	monsite
Real name	site manuel virtualmin

Email settings	
Other user permissions	
DAV login enabled?	<input checked="" type="radio"/> Yes <input type="radio"/> No
Subversion login enabled?	<input type="radio"/> Yes <input checked="" type="radio"/> No
Allow access to repositories	<input type="checkbox"/>

Save

WebDav could be interesting for small companies or organisations that want to share files between different platforms and don't have a fileserver (ex. Samba or Windows File Server).

Subversion

Subversion is a program that allows version control of files. This sort of program has multiple applications, in particular:

- keeping track of the history of the files of a project
- restoring a file to it's earlier version
- keeping track of changes made to a file: what changes, by whom, when, etc...
- providing easy access to files, locally as well as over the network
- giving multiple users the possibility to collaborate on a file

Subversion is meant to be used by developers and advanced users.

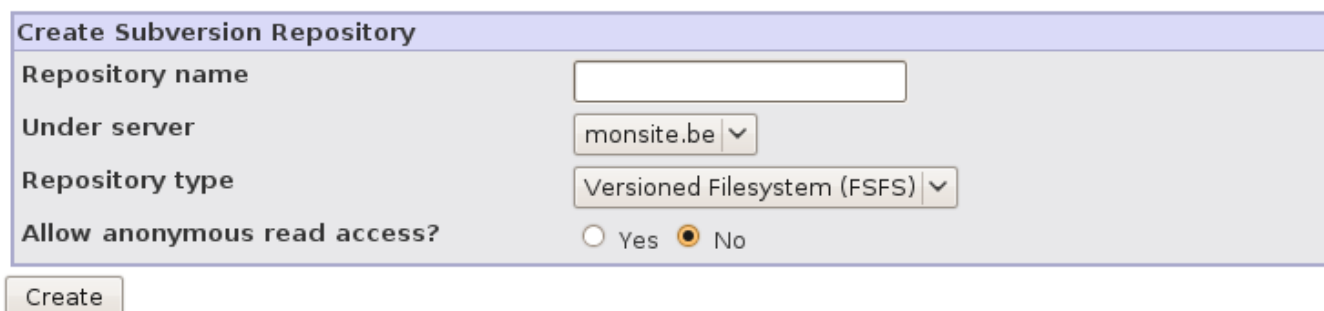
Once SVN is made active it will appear in a new sub menu called **SVN Repositories** via **Virtualmin** -> **Services** :



When you click on it for the first time you need to create a subversion repository.

Subversion Repositories

No Subversion repositories have been defined in any of your servers yet.

A screenshot of the 'Create Subversion Repository' form in Virtualmin. The form has a light purple header. It contains four fields: 'Repository name' (a text input field), 'Under server' (a dropdown menu showing 'monsite.be'), 'Repository type' (a dropdown menu showing 'Versioned Filesystem (FSFS)'), and 'Allow anonymous read access?' (radio buttons for 'Yes' and 'No', with 'No' selected). Below the form is a 'Create' button.

afterwards you will be able to view, modify or add new repositories:

Subversion Repositories

Repository name	Under server	Directory	Actions
test	monsite.be	/var/www/htdocs/monsite/svn/test	Delete Email Fix Permissions Dump Load

Create Subversion Repository

Repository name

Under server

Repository type

Allow anonymous read access? Yes No

Create

You can allow users access to subversion repositories via the menu:

Virtualmin -> Edit FTP Users. Click on the Username and then on '**Other user permissions**,

- activate the SVN-login via '**Subversion login enabled?**'
- configure to what repositories the user has access to via '**Allow access to repositories**'

Edit Mailbox

In domain monsite.be

Virtual server administration user's mailbox details

Username monsite

Real name site manuel virtualmin

Email settings

Other user permissions

DAV login enabled? Yes No

Subversion login enabled? Yes No

Allow access to repositories

Save

[Return to users list](#)

More information regarding SVN can be found in the following manual online:
Version Control with Subversion by Ben Collins-Sussman, Brian W. Fitzpatrick, C. Michael Pilato:
<http://svnbook.red-bean.com/en/1.5/svn-book.pdf>

19. Backup

What is a backup?

In information technology, a [backup](#) or the process of backing up refers to making copies of data so that these additional copies may be used to restore the original after a data loss event. Backups are useful primarily for two purposes. The first is to restore a state following a disaster (called disaster recovery). The second is to restore small numbers of files after they have been accidentally deleted or corrupted. Data loss is also very common. 66% of internet users have suffered from serious data loss. Since a backup system contains at least one copy of all data worth saving, the data storage requirements are considerable. Organizing this storage space and managing the backup process is a complicated undertaking. A data repository model can be used to provide structure to the storage. In the modern era of computing there are many different types of data storage devices that are useful for making backups. There are also many different ways in which these devices can be arranged to provide geographic redundancy, data security, and portability. Before data is sent to its storage location, it is selected, extracted, and manipulated. Many different techniques have been developed to optimize the backup procedure. These include optimizations for dealing with open files and live data sources as well as compression, encryption, and de-duplication, among others. Many organizations and individuals try to have confidence that the process is working as expected and work to define measurements and validation techniques. It is also important to recognize the limitations and human factors involved in any backup scheme. **Read more on [backup on Wikipedia](#).**

New backup system for all shared all2all web and mail servers

We installed a new backup procedure for all shared all2all hostings based on [Rsnapshot](#) and an extensible [RAID6](#) file server, a modern D2D backup system. We keep now full backup copies of the last 7 days. Every 7th day is saved 4 times per month. The MySQL and PostgreSQL database backups are based on a 31 days rotation, everyday a full backup. This new system considerably improves the safety of your hosting data. All backup processes are run in the early morning when load is very low and the servers are idle. The term "disk-to-disk", or "D2D", generally refers to disk-to-disk backup. With D2D, a computer hard disk is backed up to another hard disk rather than to a tape or floppy, like in traditional backup systems. Typical advantages of disk-to-disk are: the non-linear recovery of data, enabling a specific file to be restored quicker and simpler than with tape. Higher speed and higher capacity, relative to tape or floppy, resulting in shorter backup and recovery windows.

All shared web hosting plans contain now a large quota reserved exclusively for backups. This backup space is still sufficient once you start using 100% of the allocated web space. **Therefore no extra costs referring to backups are to be expected for the shared hostings at all2all, it's all inclusive!** All user data of these hostings is contained in the backup: files in your web directories, your e-mail directories, your mailing lists and all of your databases.

- [simple shared hosting](#): included minimum backup quota 6.95GB
- [recommended shared hosting](#): included minimum backup quota 60GB

- [large shared hosting](#): included minimum backup quota 600GB

Backup of all2all virtual servers

When you order a virtual server, you get a starting [quota](#) of 5GB on our central backup server for free. You receive a shell account on our backup server and you can access this space through a [SSH](#) connection (username and password are included in the access info for your virtual server). When you ordered your virtual server with a full Unix support contract, we already include a backup setup of all websites and databases added via the Virtualmin interface. This backup is only daily. So each next day the backup of the last day is overwritten. You can order extra backup quota as needed and at the rate indicated on the [pricelist](#). You can also change the backup scheme via Virtualmin -> Scheduled Backups to make incremental or more full backups.

Without a Unix support contract, you also get a 5GB free starting quota on our central backup server but you must configure backups yourself with for instance SCP, Rsync, Rsnapshot or Virtualmin or any other means which fits your UNIX administration habits. You can also order extra backup quota as needed and at the rate indicated on the [pricelist](#). You can as well backup to any other destination outside of the all2all network.

all2all also takes daily snapshots of all virtual servers, in order to be able to restore the host system and all connected virtual servers if a general problem appears: hardware failure, manipulation errors, etc.

Backup of dedicated servers colocated on the all2all network

By default there is no backup space included for these contracts. You can buy backup space on our central backup servers as indicated on the [pricelist](#), or you can purchase a dedicated backup server. Due to the amount of data hosted on a dedicated server, the purchase of an additional backup server may be strongly advised. We have special offers for light dedicated backup servers. You might as well set up your own backup scheme with a destination outside the all2all network.

Personal backup

We advise to regularly make a backup of your data yourself. This will allow you to quickly restore data

in case of (a) lost file(s) without having to wait on intervention of our support team.

You have 2 possibilities to make a personal backup.

- You constantly keep an up to date copy of your complete hosting space on the hard disk of your computer or on a portable USB disk. You can then easily upload files through FTP in case of a problem.
- You can use the “**backup**” function of **virtualmin** :



First, make a directory “backup” under the “root” of your hosting space. (This is the base directory when you connect with FTP to the server).

You can then store your virtualmin backups in this directory.

The virtualmin backup allows you to backup and restore all aspects of your virtual server, or only certain parts.

The virtualmin backup screen gives you the following options:

In the first paragraph of the screen, you choose which of your virtual servers you want to backup. You can also choose to include them all in your backup.



In the next paragraph, you can select the features that you want to backup of the virtual servers you selected above. You can even specify files that you don't want to include in the backup.

Features and settings

Features to backup Backup all features Only those selected below ..

Select all. | Invert selection.

- Virtual server password, description and other details
- Administration user's password, quota and Cron jobs
- Server's home directory and web pages (Include logs directory)
- Mail/FTP users and mail aliases
- Records in DNS domain, except SOA
- Apache webserver configuration
- Webalizer configuration and schedule
- Logrotate configuration for log file
- Contents of server's MySQL databases
- Contents of server's PostgreSQL databases
- ProFTPd virtual server configuration
- Webmin ACL files
- DAV users file
- Mailman mailing lists (Include archives in backup)
- Subversion repositories and configuration files

Select all. | Invert selection.

Finally, you must indicate in which directory the backup must be saved. There are multiple options, and you can even choose to download the backup file directly through your browser. Of course, when your virtual server contains a lot of data, this could well take an eternity.

Destination and format

Backup destination File or directory under virtualmin-backup/ FTP server SSH server Download in browser

Do strftime-style time substitutions on file or directory name

Transfer each virtual server after it is backed up

Backup format Single archive file One file per server (old format) One file per server

Create destination directory?

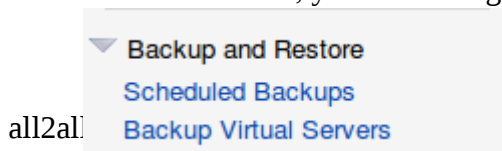
Action on error Halt the backup immediately Continue with other features and servers

Include sub-servers in backup? Yes No

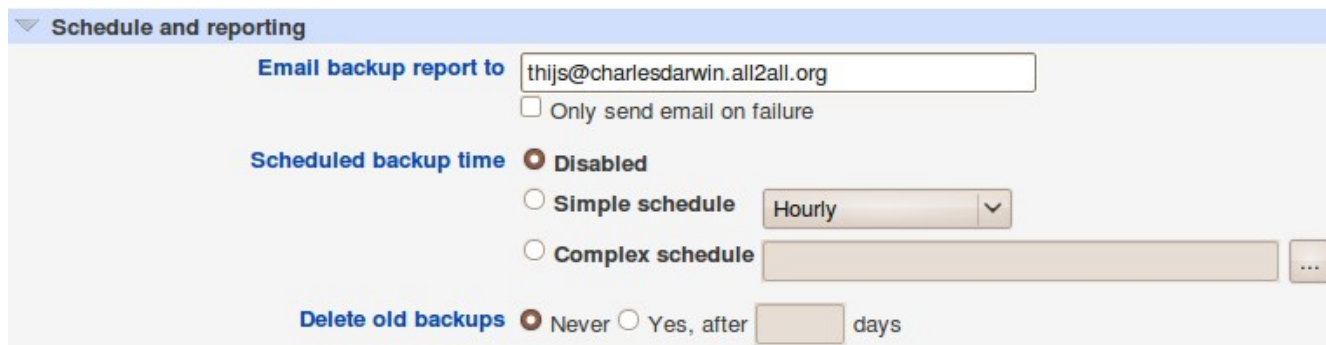
Backup level Full (all files) Incremental (only files changed since last full backup)

When you choose in **Backup destination** for “File or directory under ...“ you must **deselect** “Transfer each virtual server after it is backed up”. And under **Backup format**, you must choose : “Single archive file” or “One file per server (old format)”. For remote backups (**FTP server, SSH server, Download in browser**), you can choose the options you want. In **Backup level**, you choose the kind of backup : **full** or **incremental**.

With the option **Scheduled backups** in the Virtualmin menu, you can configure a recurrent backup schedule.



The system will then automatically take a backup on the time set by you.



Schedule and reporting

Email backup report to
 Only send email on failure

Scheduled backup time **Disabled**
 Simple schedule
 Complex schedule

Delete old backups **Never** **Yes, after** **days**

Through the options “**simple schedule**” or “**complex schedule**” you can configure the time to start the backup.

The “**Email backup report to**” allows you to send a mail to yourself once the backup is finished.

Warning!

It is important to recognize the limitations and human factors involved in any backup scheme. Please be aware that the backups executed by all2all are done according on a “best effort” principle and that we do not provide any guarantees regarding backups as specified in our [Charter](#). It is therefore advisable that you also keep security copies of all important data on your premisses too.

20. Versions

Version number	Modifications	Author
1.0	Original version	Eleni Postanzi
1.1FR	Translation to French	Eleni Postanzi
1.1NL	Translation to Dutch	Eleni Postanzi, Koen Lefever
1.1EN	Translation to English	Patrick Brunswyck
1.3EN	Conversion pdf → odt, complete review	Stefan Maenhout